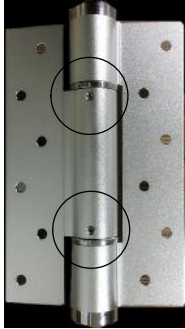


M3 Hydraulic Door Closer Hinge Instruction Manual

1. There are two fastening screws on the shaft of hydraulic hinge.



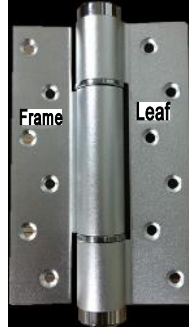
Hydraulic Hinge

2. There is one fastening screw on the shaft of spring hinge.



Spring Hinge

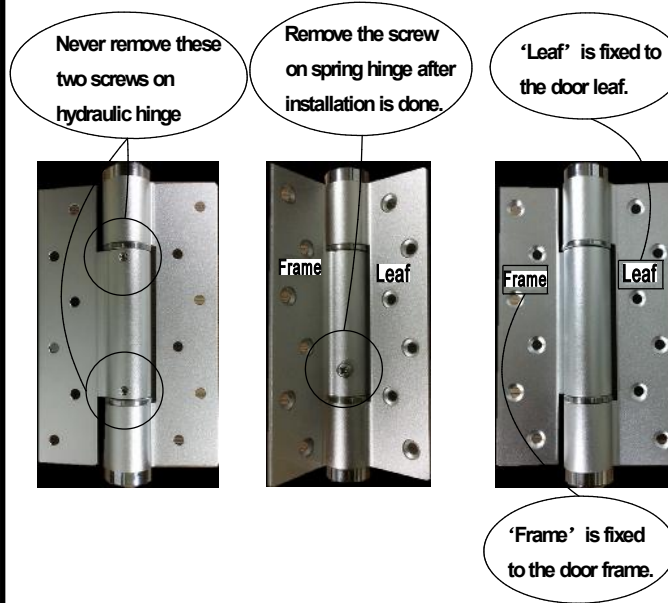
3. No screw on the shaft of empty hinge.



Empty Hinge

1

Notice:

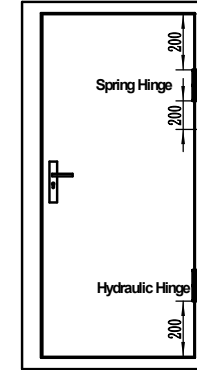


'Frame' is fixed to the door frame.

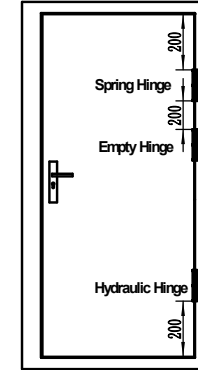
2

Hinge installation sequence:

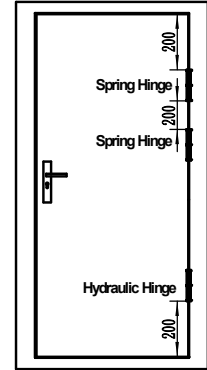
Choose the corresponding model of the hinge according to the specifications of the door leaf. The hinge installation position and sequence are shown in the figure below.



M3-50



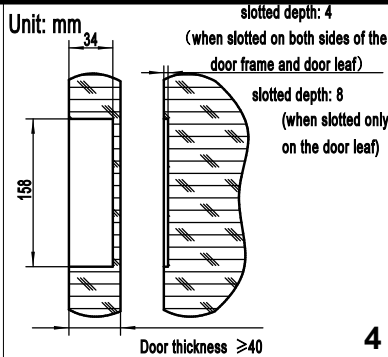
M3-70



M3-90

3

Slotted on both sides of the door frame and door leaf, or slotted only on the door leaf, the dimensions are as shown in the picture. The slot must be cut straight and flat, and same deep. Then drill 7 $\varnothing 3 \times 30$ depth holes according to the hinge screw hole position.



4

1. First, open the decorative cover on the top of hydraulic hinge. (it can be taken out directly if attracted by the magnet)

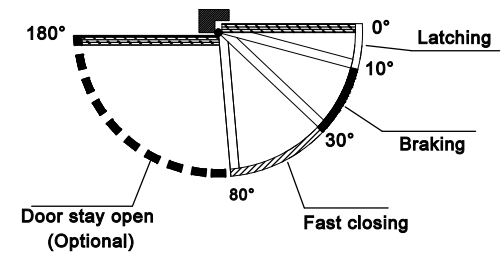


2. Use screwdriver to turn the adjusting screw to reach suitable closing effect.



6

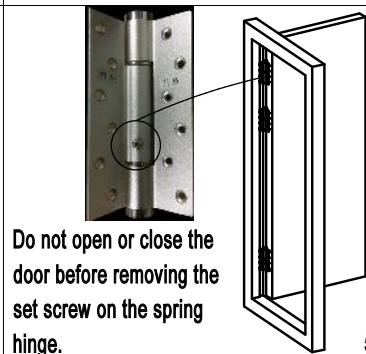
Functional diagram:



Noted: For the hinge without latching, it will close slowly in the last 10 degrees.

7

Fix the hinges on the door according to the installation sequence. The three hinges must be concentric, center aligned. After installation, remove the set screw on the spring hinge shaft, and try to open and close the door leaf. It should be smooth, quiet and without obvious friction.



Do not open or close the door before removing the set screw on the spring hinge.

5

Notice:

- When open the door, open enough angle (>45°) to avoid being hit by self closing door.
- This product has self soft close function, please do not force the self closing door to close quickly as it may cause malfunction.
- The wind or closed air pressure may have influence on the closing effect in temporary, which is not belong to malfunction.
- Check tightness of the set screws after long-term use, the screws should be tightened if become loose.
- Do not weld the hinge.
- Do not knock the hinge.

8