

ID700BP(115)

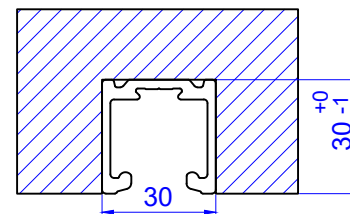
INSTALLATION

Single sliding door one way soft closing & automatic self closing with door stopper function

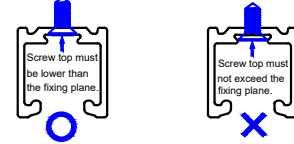
The world's first built-in three-in-one, suitable for pocket sliding doors, the soft close stroke can be quickly adjusted according to the door weight, the maximum soft close stroke is 115mm, the door can be positioned when it is pushed to the end, the door can be completely hidden in the door frame, and the push to open function allow the door automatic return to fully closed.

Weight Capacity: 10-25kg 25-50kg 50-80kg
 Door Thickness: Min. 30mm.
 Door width: 620mm-1200mm.
 Door Height: Max. 2500mm.
 Door Height Adjustment: ± 3 mm with special quick release kit

Track Dimension



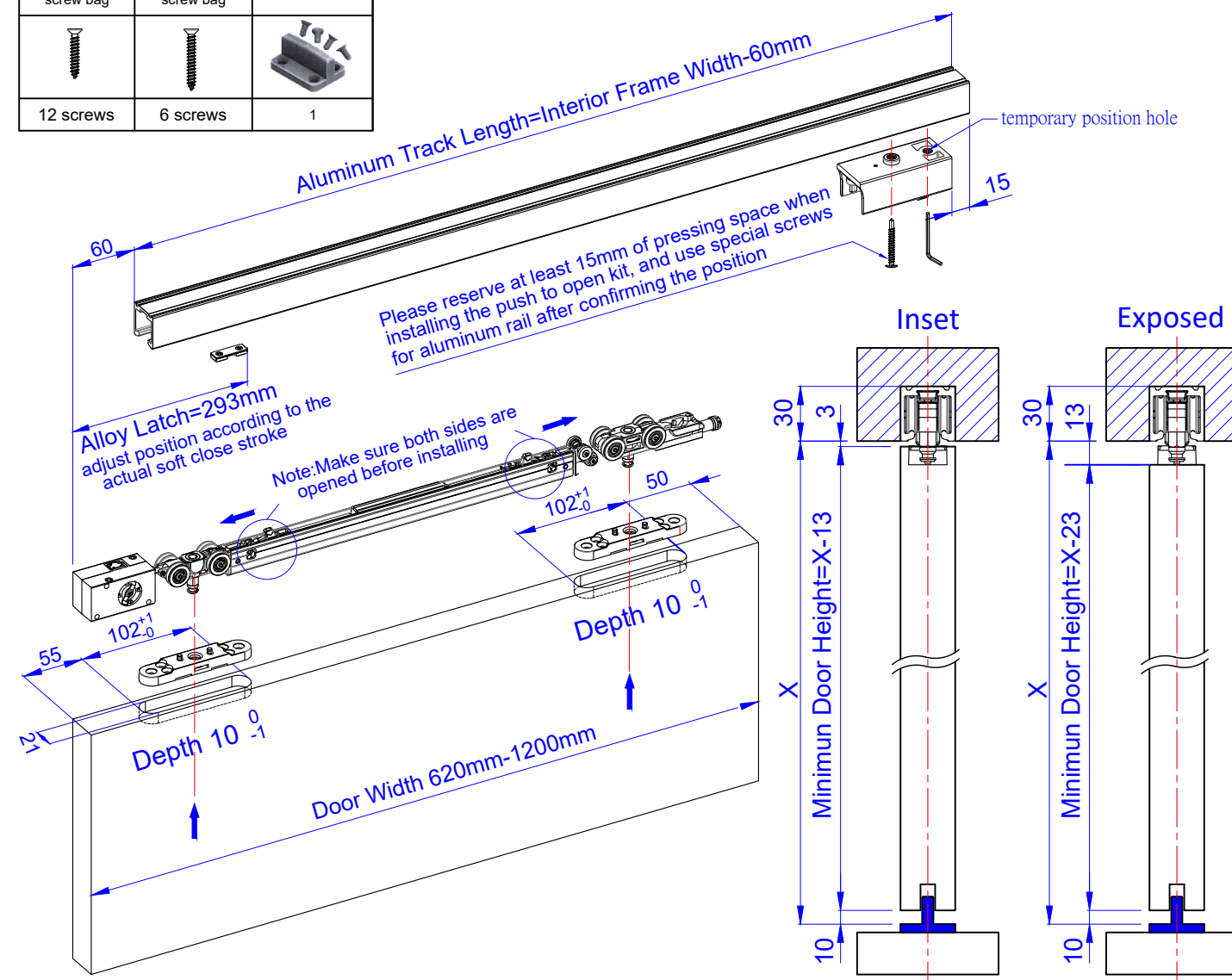
Fixing the rail:



FS 700BP Components:

Contents	Single Direction Soft-Close kits with Automatic Door Closer	Alloy Latch (Witch hex wrench)	Push to open kit (Witch hex wrench)	Adjustment Wrench	Quick Release Base	Push to open roller kit	Oil Damper	Stop key
Part								
Quantity	1	1	1	1	2	1	1	2

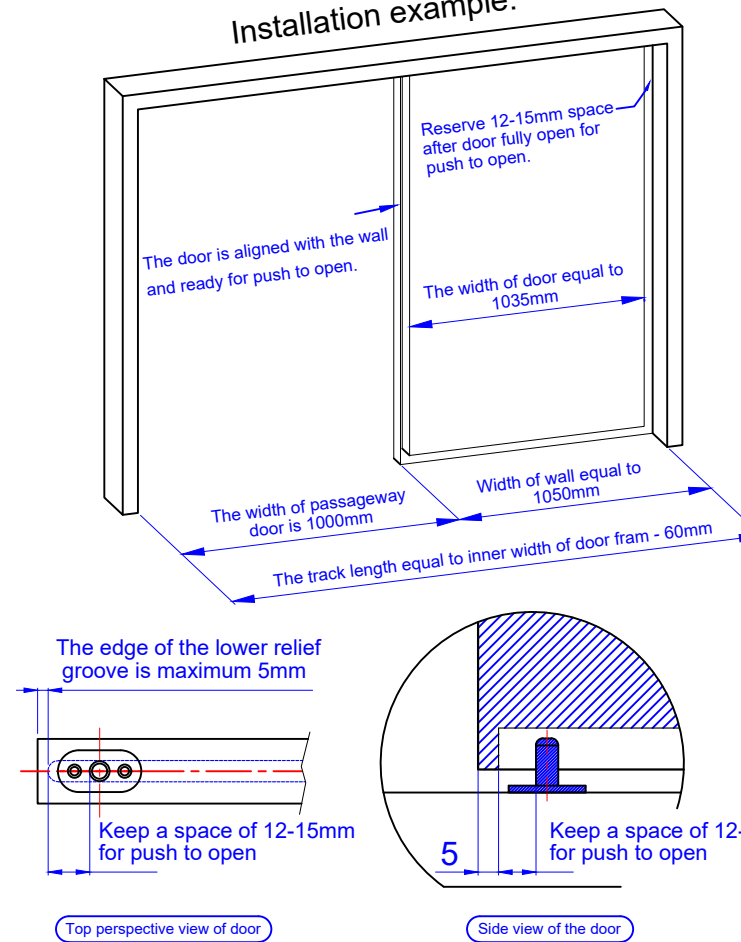
Quick Release screw bag	Aluminum Track screw bag	Door Bottom Guide
12 screws	6 screws	1



Hidden Door Installation:

- The following conditions must be met when the door design is aligned:
1. The width of the frame must be 50mm wider than the width of the passageway.
 2. The door width must be 35mm wider than the passageway.

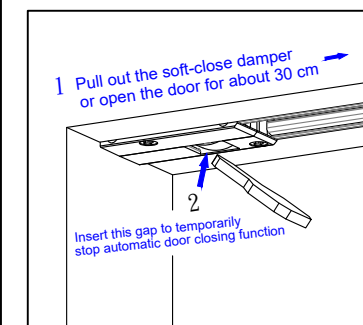
Installation example:



Installation Procedures:

1. Push to open kit
 2. Push to open roller kit
 3. Oil Damper
 4. Single Direction Soft-Close kits with Automatic Door Closer
 5. Alloy Latch
 6. Alloy Latch
 7. Alloy Latch
- Please install the push to open roller before installing oil damper

Using the stop key:



1. Pull out soft-close damper about 30cm before assembling the door. (Open the door about 30cm before disassembling the door.)
2. Insert the stop key to the gap of the automatic door closer.
3. Remove the stop key after assembling or disassembling the door to restore automatic door closing function.

Before disassembling the door:

1. Please place buffer under the gap of the door before disassembling, in order to prevent damage to the quick release base.
2. Please put the wrench between the hanger and the quick release base as the picture shows.
3. Please lift up the door before disassembling.

